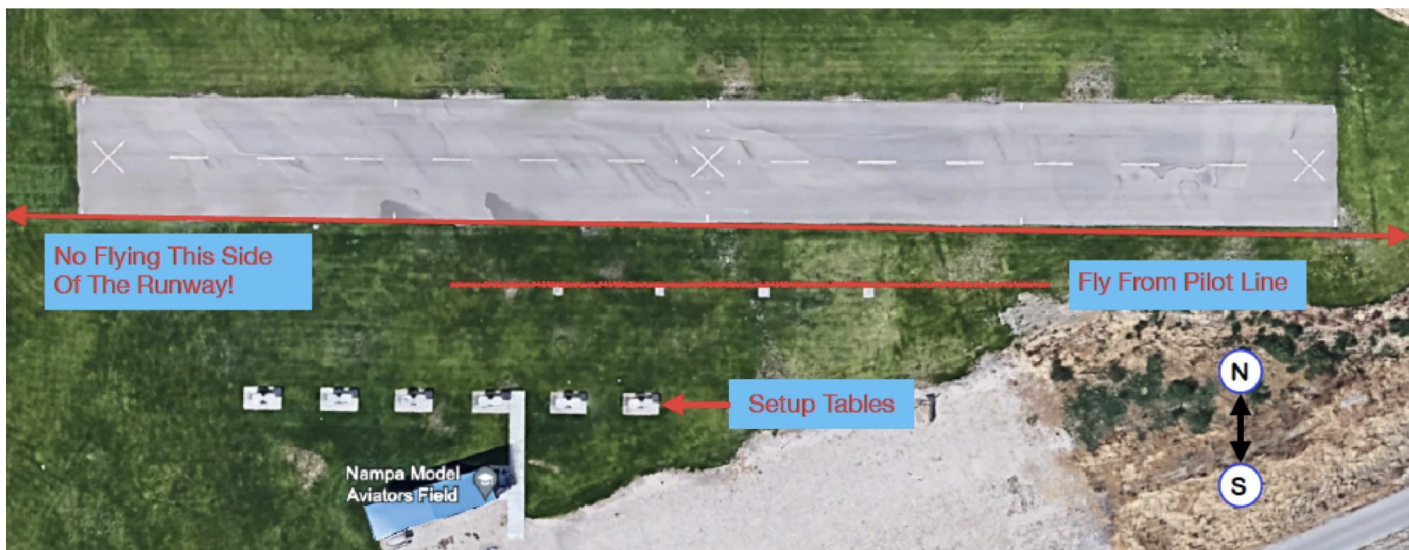


NMA Field Rules

January 2026 revision

1. Pilots must conform to the requirements of the club bylaws in order to be eligible to fly.
2. All pilots must be current AMA members and must comply with the AMA Safety Code.
3. All flight operations are limited to the Designated Flight Operations Zone shown herein (see map), and pilots shall stand at or between the pilot stations. In the event of a crash in the area outside of the Designated Flight Operations zone, an Incidence Report Form (found in the covered lounge area) must be filled out and filed in the provided mailbox.
4. Helicopters operating in the flight operations area have exclusive use of the airspace while in the air, and other aircraft shall remain on the ground until the helicopter has landed. The helipad may be used for flight trimming and adjustment during hover, but all helicopter flights are to be performed using the runway.
5. Pilots may request exclusive access of the runway and flight operations zone for performing a maiden flight, or for initial flights with a beginning student and instructor.
6. Engines shall be started with prop wash and possible prop fly off directed away from other aircraft or people. Aircraft may taxi from the set-up tables to the runway, but on return, must not taxi beyond the pilot stations.
7. No flight activity is allowed during the time the field is being mowed, which occurs on Thursdays starting at 12 noon (unless otherwise advertised). Field will open for flying after maintenance has been completed, at the discretion of the maintenance crew.
8. Planes with propellers attached shall not be operated south of the set-up tables.
9. Pilots with transmitters on 72MHz shall possess the appropriate frequency paddle from the frequency control board while broadcasting on 72MHz.
10. All dogs must be on leash, and owners are required to pick up after their pet. Animals are not allowed beyond the set-up tables.
11. Flying of internal combustion engines is limited to the hours between 9AM and 8PM. Noise limits of 98 decibels at 10 feet on concrete or 96 decibels at 10 feet on earth or grass is the maximum.
12. No alcoholic beverages allowed at the field.
13. Be aware of other aircraft in the air and communicate your intentions to other pilots. Announce your intentions when you need access to the runway (i.e., "LANDING!", "TAKING OFF!", "ON THE RUNWAY!", etc.)
14. Landing aircraft have priority, in the following order: Deadstick (and powerless gliders), electrics, and then all others.
15. As a matter of courtesy to pilots that are flying or landing. When preparing to fly do not stage your helicopter or airplane any closer to the runway than the pilot station or adjacent to the pilot station.

In case of Emergency Call 911
Field Address: 3400 Ridgecrest Drive, Nampa, Idaho



If you crash on a green, fairway or beyond, you must submit an incidence report. See field rule #3 for details.